

MATTHEWS

I·Mark™

EZ Touch C84+

Continuous Ink-Jet Printing with Touchscreen Control

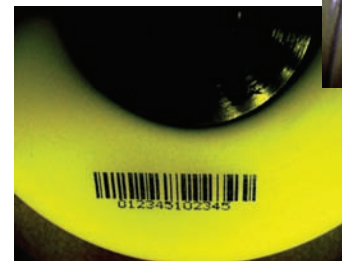
- Easy message creation and operator functions
- Up to 4 lines of print, at line speeds up to 1050 fpm
- Low operating cost
- Minimize downtime with self-cleaning printhead

Experience the ease of operation of the new I-Mark C84+ for all your coding and marking requirements. The C84+ provides fast, reliable, small character coding of expiration dates, batch codes, logos and barcodes on a wide range of products, regardless of shape or texture. Combining ease of use with high performance and flexibility, the system's 10.4" color touchscreen simplifies operation with an icon-based, graphical display.

Ensuring trouble-free viscosity control and consistent print quality, the C84+ temperature, drop speed, and ink pressure settings are automatically managed internally through a continuous diagnostic process. The patent pending, self-cleaning print head protects all internal electronics with a hermetically sealed enclosure featuring a rugged, in-line nozzle design.

Even shutting down this system is easier. Simply press a button and the built in intelligence enables an automatic-flush function that ensures your printhead is thoroughly cleaned and powered off. With one of the most efficient solvent consumption systems in the industry, the C84+ provides extremely low operating costs.

**C84+
Printhead**



	LINES OF PRINT	MIN. CHAR. SIZE	MAX. CHAR. SIZE	MAX. SPEED	OPTIMAL PRINT DISTANCE	ORIENTATION MOUNTING	PRINTHEAD DIMENSIONS
C84+	Up to 4 lines*	0.05" (1.25 mm)	.61" (15.6 mm)	1050 ft/min	.39" (10 mm)	All Directions	9.25"L 1.654"D (235 mm) (42mm)

*5th line possible using free form text editing

C84+ CONTROLLER

GENERAL PERFORMANCE

- Single button jet startup and shutdown
- Automatic printhead flush routines
- Full on-screen diagnostics
- Printer status indicators
- Simple and clean fluid refilling
- Internal memory USB flashdrive for safe data storage and transfer

OPERATOR INTERFACE

- Industrial, 10.4" color touchscreen interface with windows-based environment
- User configurable password protection
- Icon-based menus
- Color-coded classifications to distinguish message fields
- WYSIWYG message display

COMMUNICATIONS AND NETWORKING

- RS232
- Ethernet
- Shaft encoder input
- Print trigger input
- External alarm output
- Standard storage capacity over 4000 messages (based on average of 3KB each)

LANGUAGES

- English, Spanish, Italian, German, French, Dutch, Russian, Swedish, Turkish
- Keyboard: English & Russian

INK OPTIONS

- Fast dry, non-MEK, and pigmented for porous and non-porous substrates.
- Colors: Black, White, Green, Red and Yellow

PRINT FEATURES

- Static and dynamic message fields
- Upper and lower case characters
- Fonts from 5-high to 32-high
- Unicodes
- Bold factor
- Versatile height / width / delay functions
- Automatic rollover clock / calendar fields
- Name customization on year / month / day / week / shift codes
- Automatic date forward function
- Logos
- Bar codes
- Sequential and batch counters
- Inverse and reverse
- Rotate
- Remote messaging
- Database imports
- Continuous print

OPTIONS

- Positive air purge
- Alarm warning beacon
- Two-year extended warranty
- Self maintenance, support program
- Custom logos and graphics
- Custom integration
- Slide table support
- Printhead floor stand
- Stainless steel cabinet

PHYSICAL & ENVIRONMENTAL CHARACTERISTICS

ENCLOSURE DIMENSIONS:

- 23.14" L x 19.55" W x 13.01" H (588 x 497 x 331 mm)

TOTAL WEIGHT:

- 58 lb. (27 kg.)

6.56' or 13.12' printhead conduits (2 or 4 meter)

ELECTRICAL:

- 100~250 VAC, 50/60 Hz

OPERATING TEMPERATURE:

- 41° – 104° F (5° – 40° C)

HUMIDITY:

- 10 – 95% non-condensing
- Nema 12 and IP55 enclosure rating
Bench mounting



Matthews Marking Products continually improves products. The right, therefore, is reserved to alter the design and/or specifications without giving prior notice.